

## SINT-ANTONIUS



### Principal

C.V. DE VOORKEMPEN H.E.  
 Theo Verellenlaan 58 - 2990 GOOREIND  
 Directeur: Dhr J. WOUTERS

### Project

Convert a former school building into social housing

### Adress

Handelslei, 2980 Zoersel

### Surface area

1.020m<sup>2</sup>

### Execution

1998-1999

### Costs

850.000 euros

## SINT-ANTONIUS



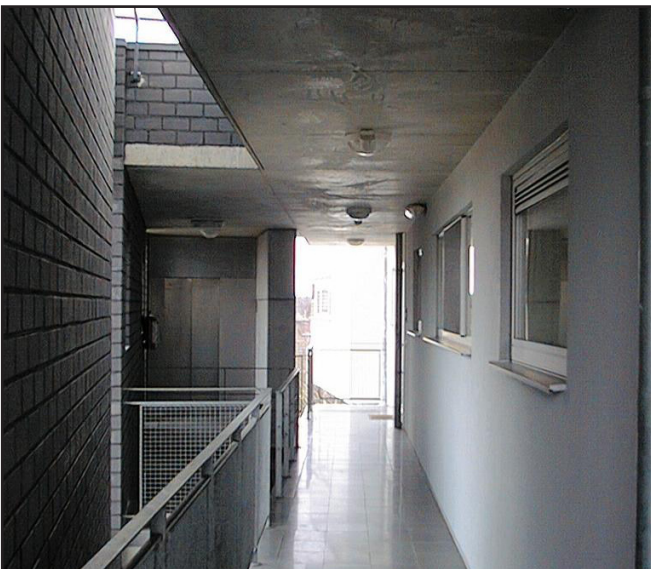
### **HISTORY**

The old school building in Zoersel has a sentimental value for the locals. We have factored this into our design. The volume of the existing building has not been changed. We implemented the necessary interventions at the height of the connection with the communal gym.

### **PROGRAM**

The 15 apartments were spread across four building layers. At every level there are three apartments with separate bedrooms and one studio. On the ground floor one room now has been equipped with communal services, such as a laundry room and a bicycle shed.

## SINT-ANTONIUS

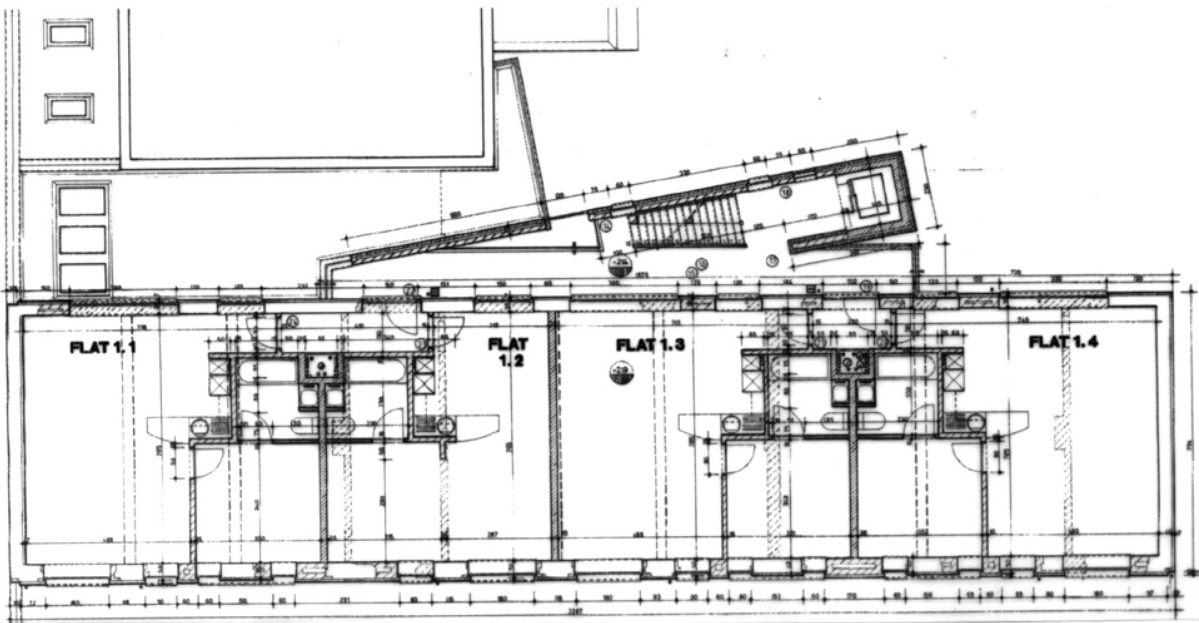
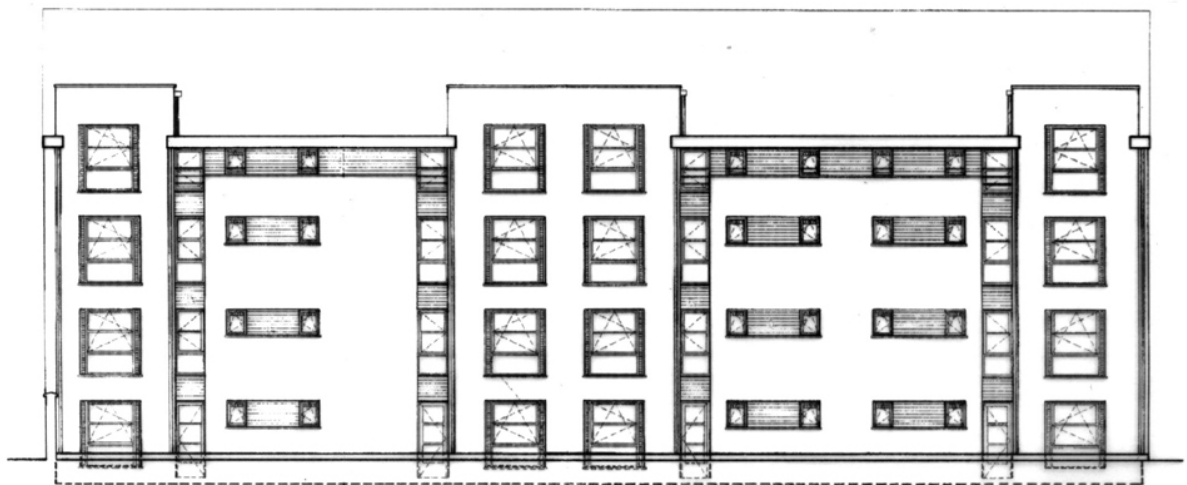


In order to be able to realise the program, all structural elements in the building have been replaced. At the height of the connection with the communal gym we have built a new stairwell (outdoor) to provide easy access to all apartments. We have also installed a hydraulic elevator in the same location. Because of the radical changes to the facades, we have packed them with mineral wool and added a decorative mineral plaster finish.

# SINT-ANTONIUS



# SINT-ANTONIUS



Facade  
Plan